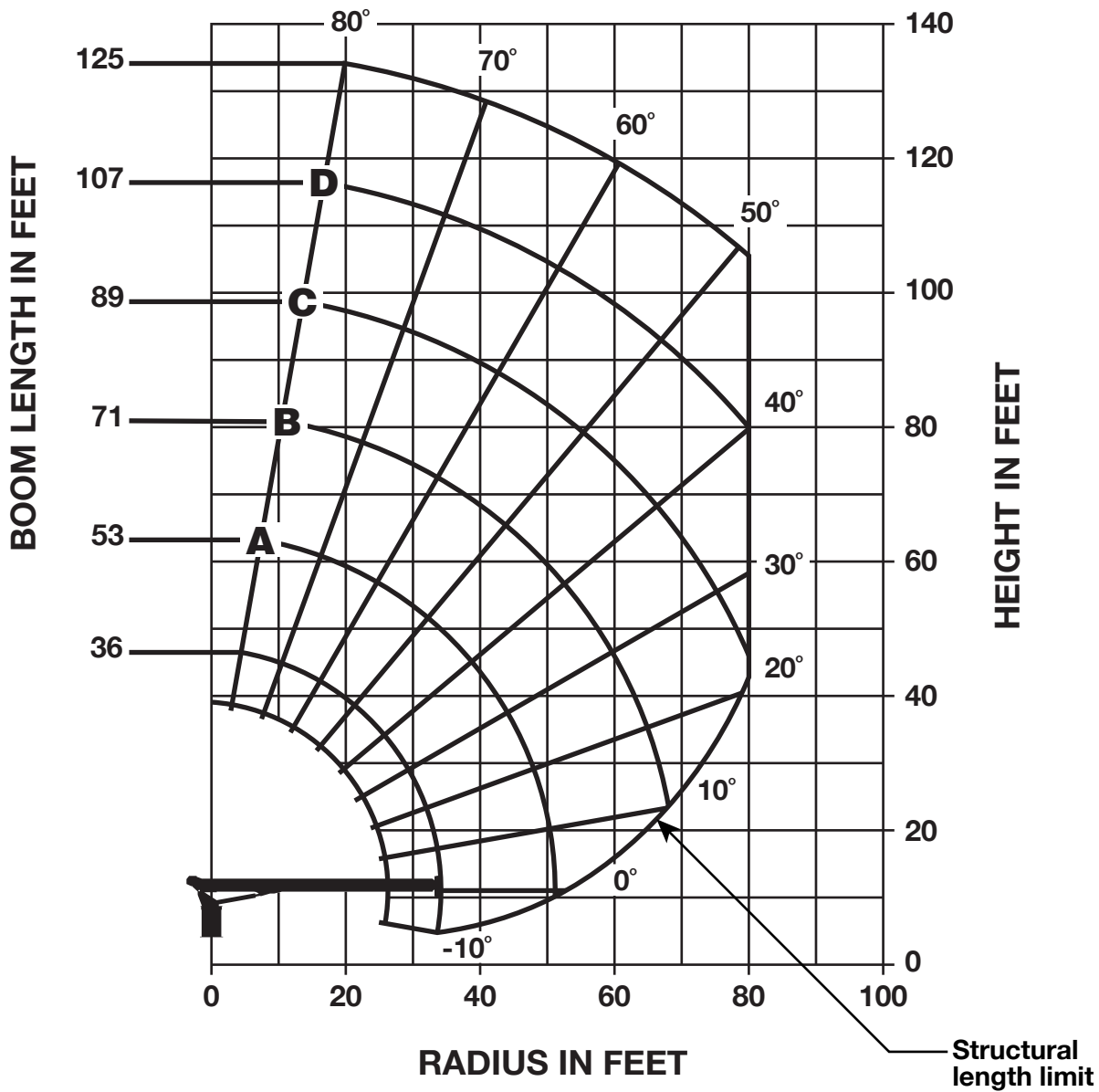


NATIONAL CRANE CORPORATION



**SERIES 9125A
WITH
NO JIB
HCA CAPACITIES**

- NOTE:**
1. Capacities do not exceed 85% stability.
 2. Shaded areas are structurally limited capacities.

LOADLINE EQUIPMENT DEDUCT (lb)	
Downhaul weight	150
One sheave block	305
Two sheave block	355
Three sheave block	575

LOAD RATINGS

LOADED RADIUS (FT)	LOADED BOOM ANGLE (DEG)	36 FT BOOM (LB)	LOADED BOOM ANGLE (DEG)	A 53 FT BOOM (LB)	LOADED BOOM ANGLE (DEG)	B 71 FT BOOM (LB)	LOADED BOOM ANGLE (DEG)	C 89 FT BOOM (LB)	LOADED BOOM ANGLE (DEG)	D 107 FT BOOM (LB)	LOADED BOOM ANGLE (DEG)	125 FT BOOM (LB)
5	80.5	52,000										
8	75.5	32,250										
10	72	25,800	78.5	25,150								
12	68.5	22,200	76	21,050	80.5	20,600						
14	65	18,950	74	18,200	79	17,550						
16	61	16,450	71.5	15,950	77	15,050	80.5	14,750				
20	53.5	12,950	67	12,550	73.5	11,750	78	12,000				
25	42.5	10,400	60.5	9,800	69.5	9,250	74.5	9,300	78	8,950	80	7,300
30	29.5	7,550	54.5	7,850	65	7,450	71	7,300	75.5	7,100	78.5	7,100
35			47.5	6,250	60.5	6,000	67.5	5,800	72.5	5,700	75.5	5,700
40			39	5,000	55.5	5,000	64	4,750	69.5	4,650	73	4,600
45			29	3,800	50.5	4,150	60.5	3,900	66.5	3,800	70.5	3,750
50			13	1,800	44.5	3,250	56.5	3,200	63.5	3,150	68	3,050
55					38	2,600	52	2,650	60	2,550	65.5	2,500
60					30.5	2,100	48	2,150	57	2,050	62.5	2,000
65					20.5	1,150	43	1,700	53.5	1,600	60	1,600
70							38	1,250	50	1,200	57	1,250
75							31.5	800	46	950	54	900
80											51	600
85												
	0	2,550										

1 PART LINE	2 PART LINE	3 PART LINE	4 PART LINE	5 PART LINE	6 PART LINE	7 PART LINE
MAX PULL 7,700 lb	MAX PULL 15,400 lb	MAX PULL 23,100 lb	MAX PULL 30,800 lb	MAX PULL 38,500 lb	MAX PULL 46,200 lb	MAX PULL 52,000 lb

NOTICE

- Do not deadhead line block against boom tip when extending boom.
- Keep at least 3 wraps of loadline on drum at all times.
- Use only 9/16" diameter rotation resistant cable with 38,500 lb breaking strength on this machine.
- Maximum capacity with "burst of speed" is 3,000 lb.